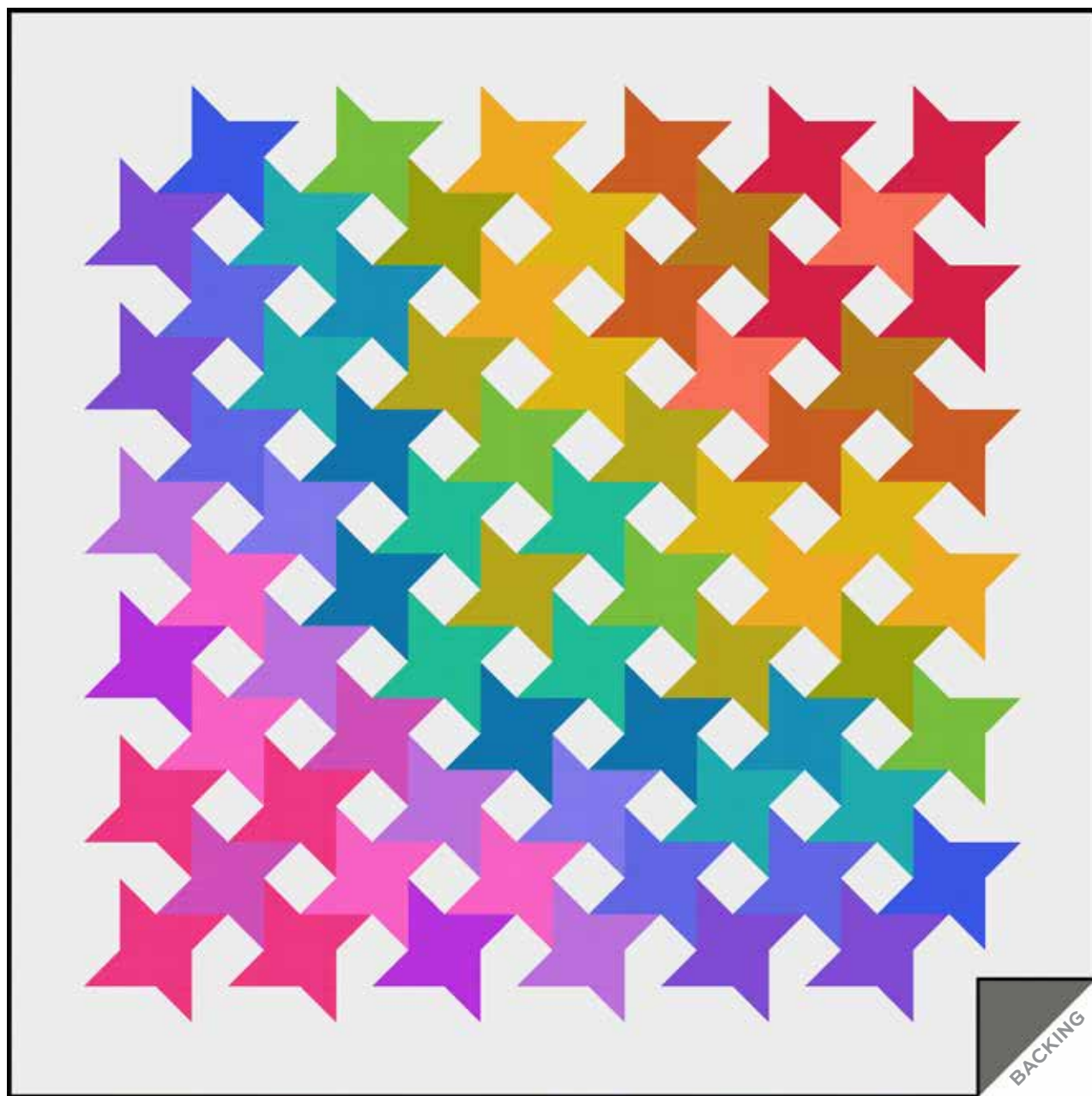


# Cross Stitch Texture II

ANDOVER FABRICS



Stellar Quilt designed by: **Janet Houts**

Quilt Size: **60" x 60"** • Skill Level: **Intermediate**

# Stellar Quilt

Introducing Andover Fabrics new collection: **Cross Stitch Texture II** by Andover Fabrics

Quilt designed by Janet Houts

Quilt finishes 60" x 60"

81 Blocks: 8" x 8"

*What an intriguing puzzle where all blocks interconnect to make this stunning rainbow-hued quilt. Careful attention to color placement is the key, although the blocks themselves are quite simple to make.*

## Cutting Directions

**Note:** Read assembly directions before cutting patches.

All measurements are cut sizes and include 1/4" seam allowances. WOF designates the width of fabric from selvage to selvage (approximately 42" wide).

### 22 Prints (Fabrics A-V)

Cut patches as listed in diagrams

### White Print (Fabric X)

Cut (2) top/bottom borders 4 1/2" x 60 1/2"

Cut (2) side borders 4 1/2" x 52 1/2"

Cut (2) squares 4 1/2"

Cut 2 1/2" x 4 1/2" rectangles as needed (Read Steps 1-2)

Cut 2 1/2" squares as needed

## Making the Quilt

**When making the blocks, refer to these labels and the list of fabrics on the last page of the pattern.**

<b>A</b> 806-R	<b>B</b> 806-O2	<b>C</b> 806-O	<b>D</b> 806-O1
<b>E</b> 806-Y1	<b>F</b> 806-Y	<b>G</b> 806-V	<b>H</b> 806-V1
<b>I</b> 806-G	<b>J</b> 806-T1	<b>K</b> 806-T	<b>L</b> 806-T2
<b>M</b> 806-B	<b>N</b> 806-B1	<b>O</b> 806-B2	<b>P</b> 806-B3
<b>Q</b> 806-P	<b>R</b> 806-P2	<b>S</b> 806-P1	<b>T</b> 806-E2
<b>U</b> 806-E	<b>V</b> 806-E1	<b>W</b> 806-C4	<b>X</b> 806-LC
<b>Y</b> CS-10-Black			

Fabric Requirements	Yardage	Fabric
<b>22 Prints</b>	2 1/2" strip roll	
<b>White Print</b>	3 yards	X
<b>Binding</b>	5/8 yard	Y
<b>Backing</b>	4 yards	W

### Binding

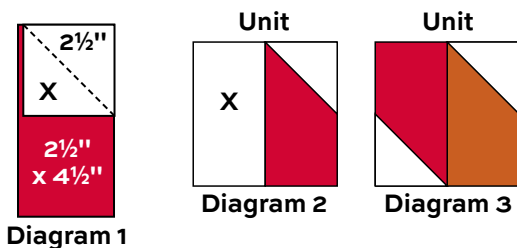
Cut (7) strips 2 1/2" x WOF for binding

### Backing

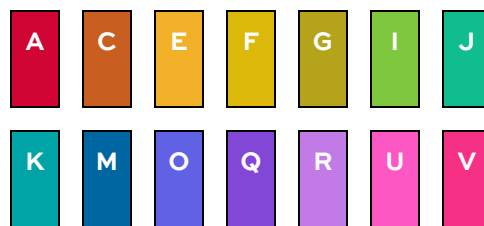
Cut (2) lengths 35" x 70", pieced to fit quilt top with overlap on all sides

## Making the Quilt

- The background 2 1/2" squares (Fabric X) are added to the colored rectangles with an easy stitch-and-flip method. Draw a diagonal line on the wrong side of a Fabric X 2 1/2" square. Position the marked square as shown on one end of a colored 2 1/2" x 4 1/2" rectangle (Diagram 1). Stitch on the marked diagonal line. Cut away the excess fabric. Press the corner up. Note that some of the pieced units require 1 colored rectangle plus a Fabric X rectangle (Diagram 2), and other units require 2 colored rectangles (Diagram 3).
- Cut the number of 2 1/2" x 4 1/2" rectangles from the 2 1/2" Strip Roll as indicated in the Cutting Chart. Hint: You can cut 8 rectangles from each strip. Choose the fabrics necessary for each unit, including Fabric X rectangles and squares. Stitch Fabric X squares to the colored rectangles as described in Step 1. Join 2 rectangles to make each unit, orienting them precisely as shown in the diagrams so the blocks interconnect when joined. The units should measure 4 1/2" square. We suggest that you photocopy the page of diagrams and check off each unit as it is made. It is important to keep track of the number needed.



### Cut 16

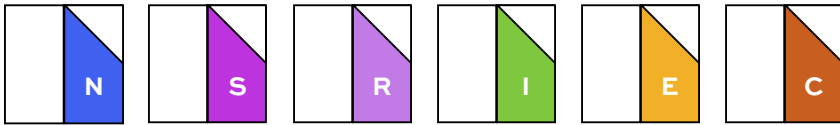


### Cut 8

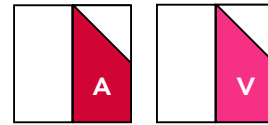


# Stellar Quilt

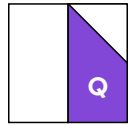
Make 4



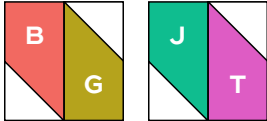
Make 7



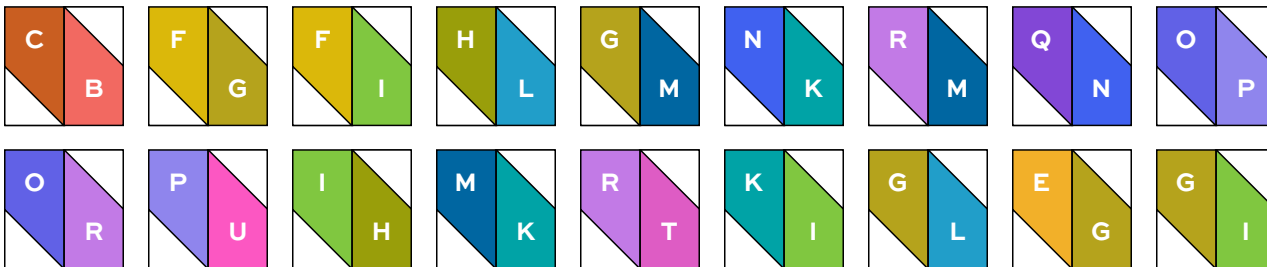
Make 8



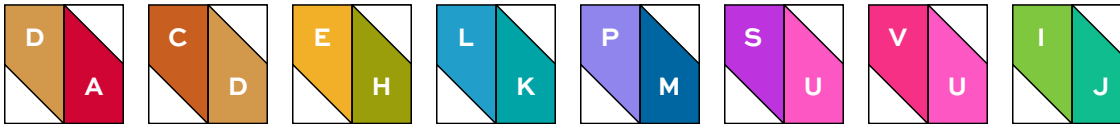
Make 1



Make 2



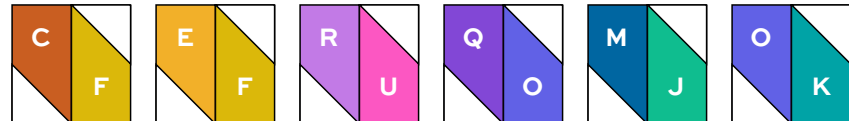
Make 4



Make 5



Make 6



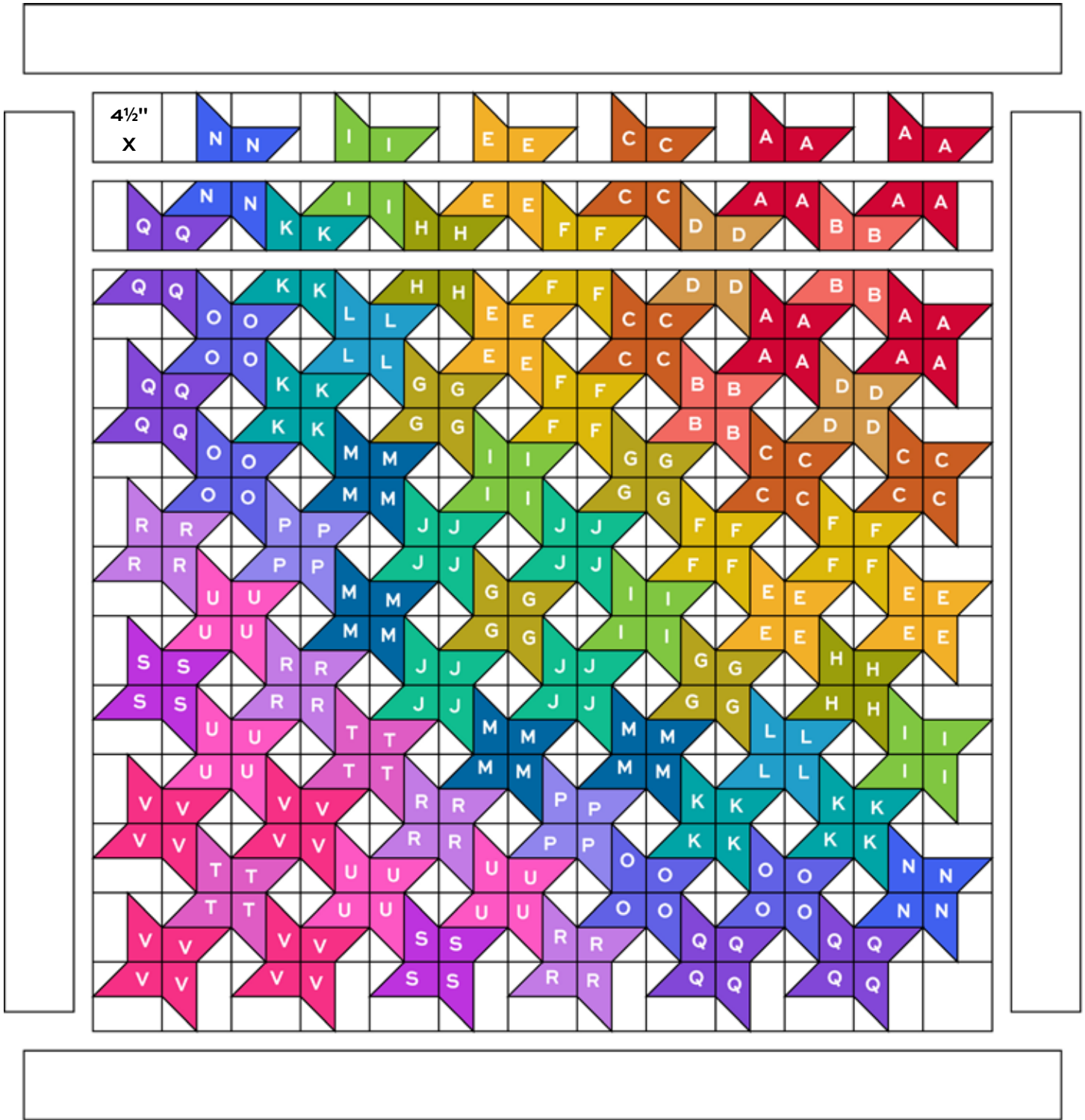
3. Referring to the Quilt Assembly, on a large flat surface or design wall, arrange the squares into 13 rows of 13 units each. Position Fabric X 4½" squares at the beginning of Row 1 and the end of Row 13. If there is limited space, work on a couple of rows at a time. Look through a camera or the wrong end of binoculars to check the positioning of all the colors. Pay careful attention to the rotation of the units. Once you are satisfied, join 13 units in a row. Replace the row back on the design wall. Position the units for the next row. Repeat these steps until all 13 rows are stitched. Finally, join the rows.

4. Add the shorter borders to the sides. Join the longer borders to the top and bottom of the quilt.

## Finishing the Quilt

5. Layer the quilt with batting and backing and baste. Quilt in the ditch around patches. Or, quilt an overall design. Bind to finish the quilt.

# Stellar Quilt





# Cross Stitch Texture II ANDOVER FABRICS



806-R



806-O2



806-O



806-O1



806-Y1



806-Y



806-V



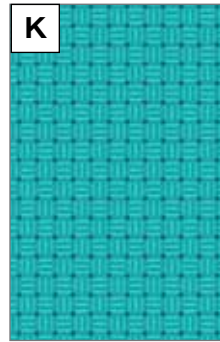
806-V1



806-G



806-T1



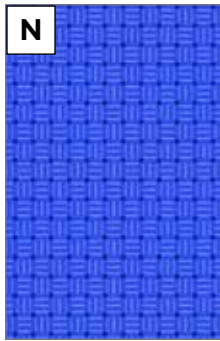
806-T



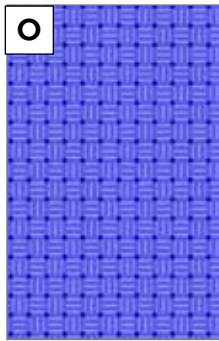
806-T2



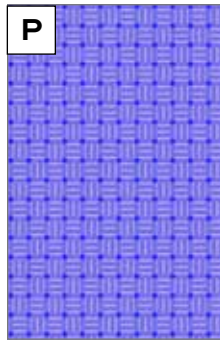
806-B



806-B1



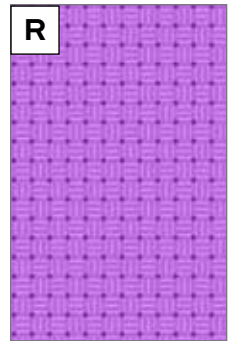
806-B2



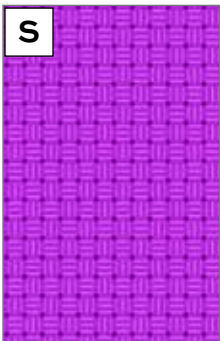
806-B3



806-P



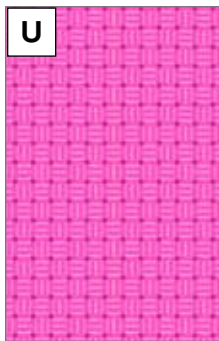
806-P2



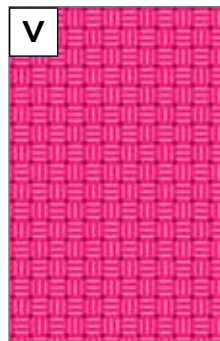
806-P1



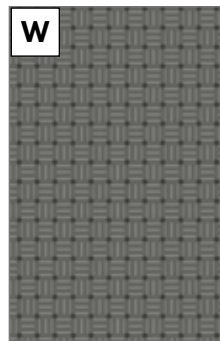
806-E2



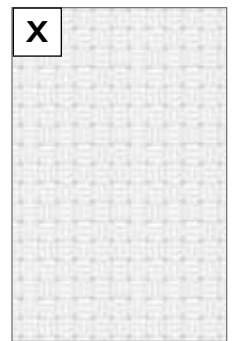
806-E



806-E1



806-C4



806-LC

Additional fabric from  
Century Solids  
by Andover Fabrics



CS-10-Black

All fabrics are used in quilt pattern. Fabrics shown are 100% of actual size.